

Jewelry
GARDEN



Styleavenue
fashion jewellery



Jewelry Garden

Two feminine passions – *flowers and jewelry.*
This eternal topic is celebrated by the renewed
Jewelry Garden collection.

It is all reminiscent of a woman.
Each petal *reflects her individuality,*
charm and mood.

Speaking in the language of flowers,
she introduces herself without a word.

A woman with long, dark brown hair styled in a braid, wearing a floral crown with large purple, pink, and white flowers. She is wearing a light pink, lace-trimmed top. Her jewelry includes a pair of earrings, a double ring, and a ring on her right hand. The background is a light-colored wall with a subtle floral pattern.

Peonies

EARRINGS
EGA162-3

RING
RGA214-3

DOUBLE RING
RGA235-3

Sterling silver,
rose gold plated, coral resin,
enamel, cultivated pearl,
cubic zirconia

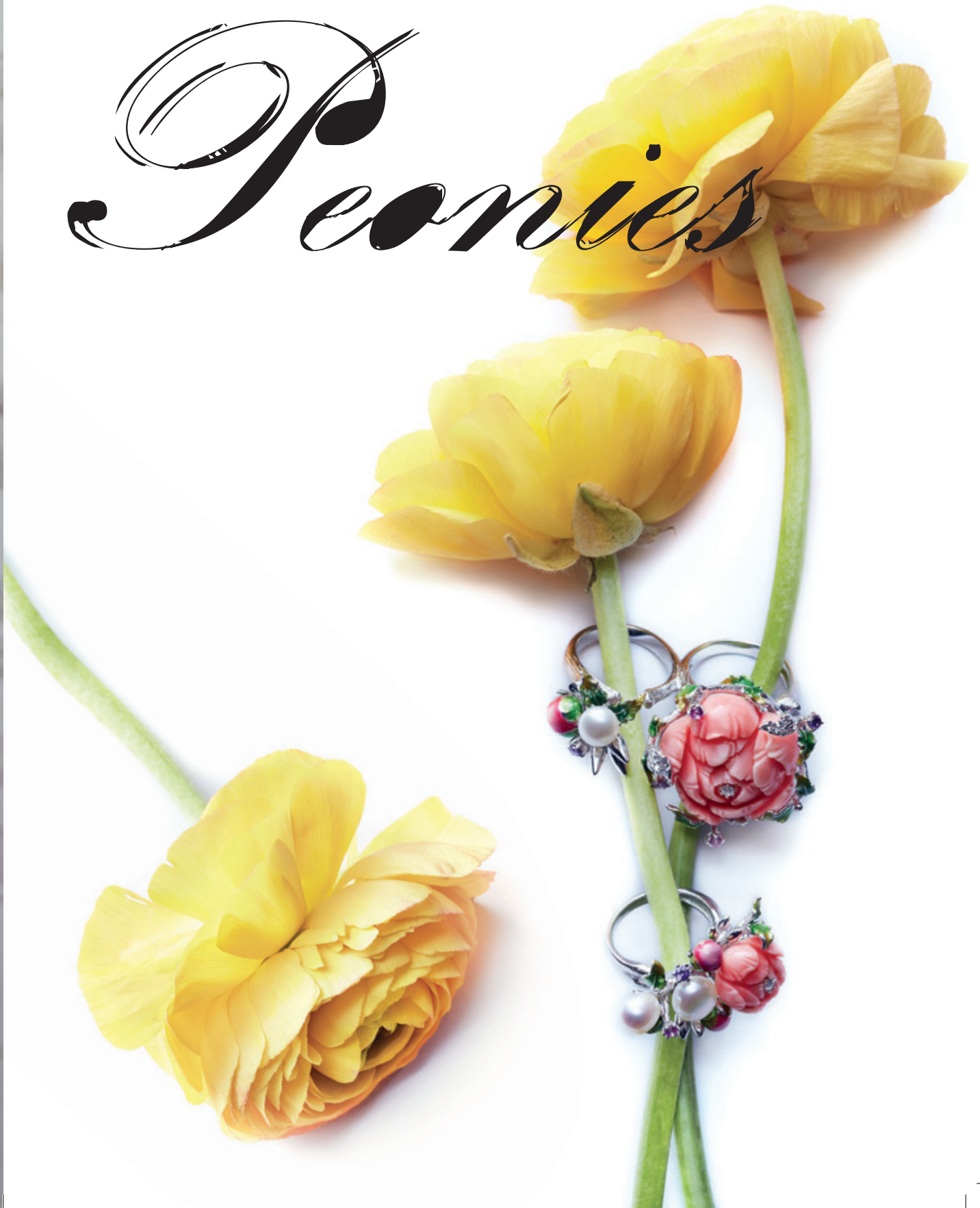
ON THE RIGHT SIDE

DOUBLE RING
RGA234-2

RING
RGA214-2

Sterling silver,
rhodium plated, coral resin,
enamel, cultivated pearl,
cubic zirconia

Peonies





Peonies

EARRINGS
EGA161-2
Sterling silver,
rhodium plated,
coral resin, enamel,
mother of pearl,
cubic zirconia.



Peonies

ODE TO FEMINITY

A true woman is full of contradictions: she is tender and strong, timid and self-confident.

Like a noble peony, *unmistakably attracting admiring looks.*

Charming flowers forming precious bouquets, *fine details, dreamy pendants with a touch of the Baroque period.* Pearl inserts convey the mother-of-pearl shimmer of satin petals.

And the sparkling stones, complement the fine enchantment.



Peonies

EARRINGS
EGA213-1

RING
RGA161-1

RING
RGA214-1

Sterling silver, gold plated,
coral resin, enamel,
cultivated pearl, cubic
zirconia.

NECKLACE
NGA213-1

Sterling silver, gold plated,
coral resin, enamel,
mother of pearl, cultivated
pearl, cubic zirconia.

Peonies

RING
RGA161-1
EARRINGS
EGA214-1

Sterling silver,
gold plated, coral resin,
enamel, cultivated pearl,
cubic zirconia.

NECKLACE
NGA213-1

Sterling silver, gold plated,
coral resin, enamel,
mother of pearl,
cultivated pearl,
cubic zirconia.







Peonies

EARRINGS
EGA161-2
Sterling silver,
rhodium plated, coral resin,
enamel, mother of pearl,
cubic zirconia.

BROOCH
BRGA161-2
Sterling silver,
rhodium plated, coral resin,
enamel, cultivated pearl,
cubic zirconia.

RING
RGA214-2

DOUBLE RING
RGA234-2

Sterling silver,
rhodium plated, coral resin,
enamel, cultivated pearl,
cubic zirconia.



Dahlias

DOUBLE RING
RGA158
Sterling silver,
gold plated, coral resin,
enamel, cultivated pearl,
cubic zirconia.

BRACELET
BGA2170RA
Sterling silver,
gold plated, coral resin,
enamel, cultivated pearl,
cubic zirconia, quartz.

ON THE RIGHT SIDE:

BROOCH PENDANT
BRGA100
Sterling silver,
gold plated, coral resin,
enamel, cultivated pearl,
cubic zirconia.



Dahlia



Dahlias

EARRINGS
EGA100-3
Sterling silver,
gold plated,
coral resin, enamel,
cultivated pearl,
cubic zirconia.

RING
RGA100-3
Sterling silver,
gold plated, coral resin,
enamel, cultivated
pearl, cubic zirconia



Dahlias

CHARM OF FINESSE

Provocative dahlias *impersonate feminine irresistibility*. The flowers with their charming, multiple petals always seem to be illuminated by the sun, just as the face of a beautiful woman is always illuminated by her smile. Fine dahlias surrounded by flying dragonflies smell like fresh summer mornings. Rings *worn on multiple fingers*, so popular this season, *will gently decorate your hands* and wide bracelets of peach quartz beads will encircle the wrist like an elegant cuff.





Dahlia

DOUBLE RING
RGA158
Sterling silver,
gold plated, rhodium plated,
coral resin, cultivated pearl,
enamel, cubic zirconia.

EARRINGS
EGA100-3
Sterling silver,
gold plated, coral resin,
enamel, cultivated pearl,
cubic zirconia.

BROOCH-PENDANT
BRGA100-3
Sterling silver,
gold plated, coral resin,
enamel, cultivated pearl,
cubic zirconia.

RING
RGA100-3
Sterling silver,
gold plated, coral resin,
enamel, cultivated pearl,
cubic zirconia.



Dahlias

RING
RGA100-5
Sterling silver, gold plated,
coral resin, enamel,
cultivated pearl,
cubic zirconia.

EARRINGS
EGA158-5
Sterling silver, gold plated,
coral resin, quartz, enamel,
cubic zirconia.

ON THE RIGHT SIDE:

RING
RGA100-5
Sterling silver, gold plated,
coral resin, enamel,
cultivated pearl,
cubic zirconia.

EARRINGS
EGA158-5
Sterling silver, gold plated,
coral resin, quartz, enamel,
cubic zirconia.



Roses

EARRINGS
EGA038-2
RING
RGA038-2

Sterling silver, rhodium plated, coral resin, turquoise resin, enamel, cubic zirconia.

NECKLACE
NGA216BLA-2

BRACELET
BGA216BLA-2

Sterling silver, rhodium plated, coral resin, turquoise resin, enamel, cubic zirconia, agate.

ON THE RIGHT SIDE:

NECKLACE
NGA216BLA-2

Sterling silver, rhodium plated, coral resin, turquoise resin, enamel, cubic zirconia, agate





Roses



Roses

BRACELET
BGA066-5/30M

NECKLACE
NGA065-5/30

Sterling silver, gold plated,
stingray, coral resin,
enamel, cubic zirconia.

RING
RGA038-5

Sterling silver, gold plated,
coral resin, enamel,
cubic zirconia.



A decorative background featuring watercolor-style roses in various shades of pink, magenta, and purple. The roses are rendered with soft, blended colors and visible brushstrokes, creating a romantic and artistic atmosphere. One large, vibrant pink rose is prominent in the upper right corner, while other smaller, more muted tones are scattered throughout the page.

Roses

LOVE LEGEND

Love is a rose.

Like love, a precious rose has many forms:
innocent white, fine tea, feminine coral,
passionate red, mystic blue – and each of them
whispers its own love story.

This splendid flower's abundance of aromatic
velvety petals is *reminiscent of the pages of*
a sultry novel, stirring our imagination.
Our heart fills with gentle feelings at the sight of
pastel rose beauties.

Roses

BRACELET
BGA066-5/30M
NECKLACE
NGA065-5/30

Sterling silver,
gold plated, stingray,
coral resin, enamel,
cubic zirconia.

RING
RGA038-5

EARRINGS
EGA038-5

Sterling silver,
gold plated,
coral resin, enamel,
cubic zirconia.







Roses

EARRINGS
EGA040-3
Sterling silver,
black rhodium plated,
coral resin, enamel,
cubic zirconia.

RING
RGA037-1
Sterling silver,
gold plated, coral resin,
enamel, cubic zirconia.

RING
RGA040-3
Sterling silver,
black rhodium plated,
coral resin, turquoise resin,
enamel, cubic zirconia.

ON THE RIGHT SIDE :

EARRINGS
EGA040-3
Sterling silver, black rhodium
plated, coral resin, enamel,
cubic zirconia

RING
RGA040-3
Sterling silver,
black rhodium plated,
coral resin, turquoise resin,
enamel, cubic zirconia.



*Love is a
Rose...*



OUR STORES:

CZECH REPUBLIC

PRAGUE:

Národní 43

Karlova 22

Celetná 4

Airport Václav Havel – Terminal 2

MARIÁNSKÉ LÁZNĚ:

Hlavní třída 56/133

KARLOVY VARY:

Lázeňská 32

SLOVAKIA

PIEŠŤANY:

Winterova 1765/36

UKRAINE

KIEV:

Shopping Centre Ocean Plaza, Gorkogo 176

Shopping Centre Dream Town, Obolonsky prospekt 1B

Shopping Mall Gulliver, Ploschad Sportyvna 1-A

ODESSA:

Shopping Centre Srednefontansky, Semaphorny 4

Shopping Centre Evropa, Deribasovskaya 21

Shopping Centre City Center, prospekt Marshal Zhukov 2

CHARKOV:

Shopping Centre Ave Plaza, Sumskaia 10

YALTA:

Gogolya 1A

KAZAKHSTAN

ALMATY:

Gogolya 75

Shopping Centre Dostyk Plaza, prospekt Dostyk 160

CHINA

HANGZHOU:

1 Wulin Square, Hangzhou Tower

RUSSIA

MOSCOW:

Hotel Radisson Slavyanskaya, Ploschad Evropy 2
Shopping Center Afimall City, Presnenskaya nab. 2
Shopping Centre Mega Khimki

SAINT PETERSBURG:

Galereya Butikov Grand Palace, Nevsky prospekt 44
Shopping Centre Tolstoy Square, Lva Tolstogo 9
Shopping Center Ekopolis, Vyborgskoe Shosse 13

IVANOVO:

Shopping Mall Serebryany Gorod, 8 Marta 32

KALININGRAD:

Shopping Centre Evropa, Teatralnaya 30, Atrium Berlin

KEMEROVO:

Shopping Centre Promenad-3, Lenina 59a

NOVOKUZNETSK:

Shopping Centre City Mall, Kirova 55

NOYABRSK:

Sovetskaya 85G

PERM:

Komsomolsky prospekt 66, Yuvelirny Dom Dragotsennaya Orchidea

ROSTOV ON DON:

Shopping Center Gorizont, prospekt M. Nagibina 32/2

TYUMEN:

Shopping Centre Galereya Voyage, Gertsena 94





Styleavenue
fashion jewellery